



Westleton,

Guide Price £450,000

- New Home Of Exceptional Design and Specification
- 2 Miles from the Coast & RSPB Minsmere
- Multifunctional Kitchen with Integrated Appliances
- Highly Regarded Village Within The Suffolk Heritage Coast
- Sustainable Low Carbon Family Homes
- Predicated EPC - B
- Area of Outstanding Natural Beauty
- 10 Year ICW Guarantee Two Year Arbora Homes Customer Care Period.
- INTERNAL PHOTOS ARE OF THE SHOW HOUSE AND INDICATIVE OF THE FINISH FOR THE REMAINING PLOTS

Cherry Lee Close, Westleton

Impeccable and elegantly finished homes with premium features and high-end specifications for aspirational, low carbon living in this most sought after of village 2 miles from the coast.



Council Tax Band:



SPECIFICATION

The Swallow, Kingfisher, Bittern, Swit, Sandpiper, Osprey and Avocet kitchen and utility rooms will be fitted with a Commodore Wardley Shaker kitchen range in Limestone, with the islands in Carrington Blue with brass handles.

These kitchens will have Miami Vena Quartz worktops and upstands, as well as fully integrated Siemens appliances, including a built-in single oven, combi-microwave oven, warming drawer, 4 ring touch control electrical hob, dishwasher and fridge freezer. Belfast ceramic double sink with a Quooker hot tap in brass and wine cooler.

The Tern, Teal and Heron will be fitted with a Commodore Tatton Shaker kitchen range in Pebble with chrome handles. Miami Vena Quartz worktops and upstands, as well as fully integrated Bosch appliances including a built-in double oven, 4 ring touch control electric hob, dishwasher, fridge freezer, double sink and wine cooler.

Amtico flooring will be fitted to all kitchens, utility rooms, bathrooms, ensuites and cloakrooms. All homes will feature contemporary white Roca bathroom suites and chrome fixtures with sandy grey vanity units to the cloakrooms and white vanity units to the ensuites. Family bathrooms will have black fixtures. Chrome towel rails and Hollywood Gloss Marble wall tiles will feature in all cloakrooms,

bathrooms and ensuites.

Each home is equipped with sustainable features including EV car charging points and the infrastructure in place to facilitate solar and battery systems

TENURE
Freehold

ENERGY PERFORMANCE CERTIFICATION
Predicted Energy Assessment rating to fall in Band B

OUTGOINGS
Council Tax Banding to be assessed. Homes are subject to an estate charge of £548.50 per annum

SERVICES
Mains electricity, water and drainage.

VIEWING ARRANGEMENTS
Please contact Flick & Son, 8 Queen Street, Southwold, IP18 6EQ for an appointment to view. Email: southwold@flickandson.co.uk
Tel: 01502 722253 Ref: 20913/RDB.

FIXTURES AND FITTINGS
No fixtures, fittings, furnishings or effects save those that are specifically mentioned in these particulars are included in the sale and any item not so noted is expressly excluded. It should not be assumed that any contents, furnishings or furniture shown in the photographs (if any) are included in the sale. These particulars do

not constitute any part of any offer or contract. They are issued in good faith but do not constitute representations of fact and should be independently checked by or on behalf of prospective purchasers or tenants and are furnished on the express understanding that neither the agents nor the vendor are or will become liable in respect of their contents. The vendor does not hereby make or give nor do Messrs Flick & Son nor does any Director or employee of Messrs Flick & Son have any authority to make or give any representation or warranty whatsoever, as regards the property or otherwise.





THE TERN & TEAL

THREE BEDROOM SEMI-DETACHED HOME
HOMES | PLOTS 8 & 9



- PAGE 42 -

All images are for illustrative purposes only and do not represent the actual property. © 2026 Flick & Son

97 sqm | 1,044 sqft
PROPERTY SIZE

3
BEDROOMS

2.5
BATHROOMS

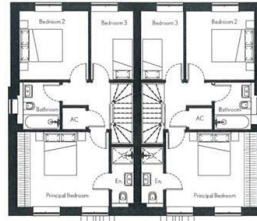
SINGLE GARAGE

GROUND FLOOR

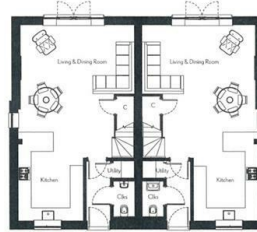
Kitchen	3m x 4.2m
Utility Cupboard	0.8m x 1m
Living & Dining Room	5m x 5.3m
Cloakroom	1m x 1.7m
Single Garage	3.2m x 6.2m

FIRST FLOOR

Principal Bedroom	3.5m x 4.3m
Ensuite	1m x 2.6m
Bedroom 2	3.1m x 3.2m
Bedroom 3	2.1m x 3.2m
Bathroom	1.9m x 2.2m

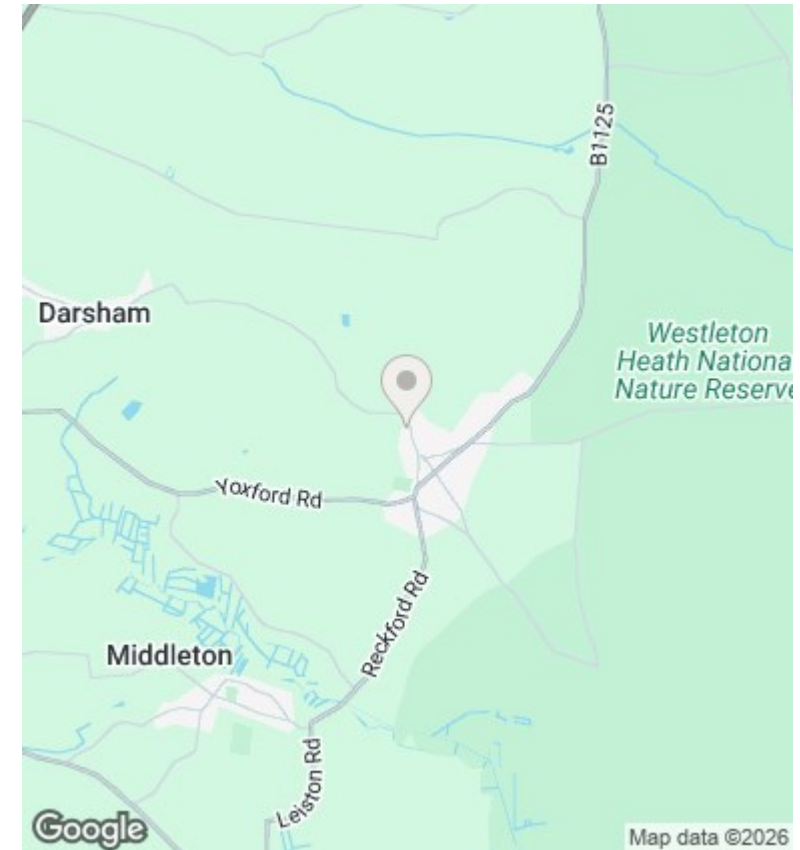


FIRST FLOOR



GROUND FLOOR

- PAGE 43 -



Conveyancing, Surveys & Financial Services

Flick & Son may refer clients to My Mortgage Planner for financial services, Fairweather Law, Stamford Legal or Juno Property Lawyers Ltd for conveyancing and MS Surveys for property surveys. It is the clients decision whether to use these services however if the decision is made to proceed with these services, it should be known that Flick & Son will receive a referral fee of £299 for My Mortgage Planner, £200 fee for Fairweather Law referrals, £150 fee for Stamford Legal, £250 fee for Juno Property Lawyers Ltd and £50 referral fee for MS Surveys.

Floorplans

These plans are for illustrative purposes only and should not be used for any other purpose by any prospective purchaser or any other party.

Energy Efficiency Rating		Current	Potential
Very energy efficient - lower running costs			
(92 plus)	A		
(81-91)	B		
(69-80)	C		
(55-68)	D		
(39-54)	E		
(21-38)	F		
(1-20)	G		
Not energy efficient - higher running costs			
England & Wales		EU Directive 2002/91/EC	

Energy Efficiency Rating

The full energy performance certificate can be viewed online at the national EPC register at www.epcregister.com